



PACIFIC NORTHWEST CHAPTER BULLETIN

2001 SYMPOSIUM FEATURES "A RAINBOW OF MINERALS"

With its many changes, this years Symposium will be a special treat, a truly unique mineralogical experience for all. To share in our good time, we've invited as special guests the Fluorescent Mineral Society (FMS) and the Northwest Micro Mineral Study Group (NWMMSG). Both renowned organizations will play an active and unprecedented role in this years event.

The Symposium theme of "A Rainbow Of Minerals" with a little creative manipulation lends itself readily to a fluorescent program and seemed a natural when considering the strong NW attraction for fluorescence. Fellow FM and FMS member Don Newsome has worked diligently with me in this collaboration and we're eagerly looking forward to top-notch fluorescent Displays, Speaker Presentations and Live Fluorescent Demonstrations. Manuel "Manny" Robbins, the hobbies most published fluorescent author will be one of our two Main Speakers this year. FMS members from as far away as California will swell our ranks during this years event and let's all take a moment to welcome these new folks to our biggest annual function.

Additionally, and to keep my field collecting monster at bay, I've secured Jesse Fisher as one of our two Main Speakers. Jesse and partners are actively mining the sensational fluorite and fluorite and galena specimens from the Rogerley Mine, Weardale, England which have been featured in many mineralogical publications. In addition to his California Pegmatite talk he's promised us a talk full of wet dripping fluorite crystal lined pocket photos and I can't wait. He'll also be sharing a Display and has even consented to bring some special specimens which he'll be offering for sale.

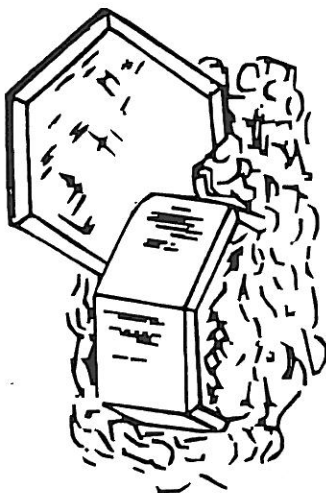
We'll also be continuing our What's New in the Northwest segment of the Symposium on Sunday morning featuring talks from several of our own FM members. We're all real excited about the Symposium and we've been real busy working together to bring this years event to you, come on out and have a good time while showing your support for the Northwest's most prestigious mineral happening. See you there,

John Cornish, Speaker Chair and Master of Ceremonies

PACIFIC MINERAL MUSEUM TO HOST JUNE MEETING

The June 16th general membership meeting of PNW Friends of Mineralogy will be hosted by the Pacific Mineral Museum, 848 West Hastings Street, Vancouver, BC Canada. Director/Curator Mark Mauthner has extended an invitation to all club members. The museum will be open to club members for viewing in the afternoon free of charge. Donations are appreciated and of course museum memberships can be purchased reasonably which allow year long access and other membership benefits including shop discounts. If you have not visited the museum recently this is an excellent time to view this world class collection situated in a superb display facility.

There will be space available for limited trading so bring a flat of your best material. The museum shop also provides an excellent opportunity to add to your collection. The business meeting will begin at 5pm when the museum closes to the general public. Business to be discussed will include plans for the 2001 Symposium in Kelso, WA. If you have questions or need directions you can contact Mark or the museum staff at 604-689-8700 or by e-mail at markm@pacificmineralmuseum.org.



**Friends of Mineralogy, highlights of
annual board meeting February 9, 2001,
Tucson**

Election of 2001 Officers:

Susan C. Eriksson, PhD, President
William H. (Bill) Dameron, Vice President
Chuck Miller, Secretary
Jack Nieburger, Treasurer

At the meeting the Treasurer reported a balance as of 12/31/00 in the amount of \$20,620.01, total on hand in all bank accounts. Current national membership is 516.

Bill Dameron, chair of the committee on FM Goals and Directions presented an Overview of the organization's objectives, what the organization was doing, and what it should or could be doing. The document includes an updated Proposed Long-Term Objectives, proposed Short-Term Goals and Working Groups. The point was made that "the "strategic" language (*of the documents*) is important, but much more pressing and vital is actually getting FM to 'do something,' i.e., to get people off their duffs and active."

The chair of the Mineral Locality Index, Phil Goodell, noted that it is important for the PNW Chapter to update its locality index and commented that it is especially needed for Oregon localities.

Chuck Miller reported on the national FM website: www.friendsofmineralogy.org

The annual membership meeting was held on Saturday, February 10th and the Symposium theme, in conjunction with the Tucson Gem and Mineral Show, was "The Minerals of Russia".

Noble Witt Nominations

Nominations are now being sought for the 2001 Noble Witt Award. Nominees should be someone who has made contributions to the club or to the fulfillment of its goals to educate and promote the study of minerals. Names should be submitted to any Board member before August 10, 2001. The Board will select the award winner to be announced at the 2001 Symposium. Previous recipients are listed below.

1993 - Mike Groben
1994 - Bob Smith
1995 - Norm Steele
1996 - Ray Lasmanis & Cheryl Burchim
1997 - Richard and Helen Rice
1998 - Arlene Handley
1999 - Bob Boggs
2000 - Rudy Tschernich

PNWFM 2000/2001 OFFICERS

PRESIDENT - Sharleen Harvey
2309 SW 1st Ave #2142, Portland, OR 97201-5080
503-248-4194
bill-sharleenharvey@worldnet.att.net

VICE PRESIDENT - Jim Etwiler
3935 Interlake Ave N, Seattle, WA 98103-8131
206-633-1512
james.a.etzwiler@boeing.com

SECRETARY - John Lindell
25714 268th Ave SE, Ravensdale, WA 98051-9774
425-432-4939
lindell4@aol.com

TREASURER - Cheryl Burchim
35903 N Redstone Dr., Benton City, WA 99320
509-588-8395
jim-cheryl@pipestone.com

* The Board has approved an operating budget of \$1900 for 2001. Based on a projected income of \$1650, this would give a shortfall of \$250. Current club balance is approximately \$6300. Operating budget does not reflect costs associated with the symposium which is run on a break even budget.

**THE PACIFIC NORTHWEST CHAPTER
OF THE FRIENDS OF MINERALOGY
27TH ANNUAL MINERAL SHOW AND SYMPOSIUM
SEPTEMBER 28TH TO 30TH 2001**

Featuring : A RAINBOW OF MINERALS.

ADMISSION TO THE MINERAL SHOW IS FREE

Open 6 pm to 10 pm Friday Sept. 28th, 8 am to 10 pm Saturday Sept. 29th and 8 am to noon Sunday Sept. 30th

DISPLAYS will include some of the finest mineral specimens from the Pacific Northwest and the world. Exhibits will be presented by the Rice Northwest Museums of Rocks and Minerals from Hillsboro, Oregon, Pacific Mineral Museums from Vancouver, British Columbia and fine mineral collectors in the Northwest.

This year the Northwest Region of the Fluorescent Mineral Society, Inc. will have special displays of fluorescent minerals and a general meeting Saturday night.

Four outstanding **MINERAL DEALERS** will be selling beautiful specimens from all over the world include:

**THE AESTHETICS UNDERGROUND, BANFF, ALBERTA
HARVEY GORDON MINERALS, RENO, NEVADA
LEHIGH MINERALS, BOUNTIFUL, UTAH
OXCART MINERALS, VIDA, OREGON**

SILENT AUCTIONS will offer minerals at a bargain price.

MICRO MINERAL BOOTH with microscopes for viewing and identification of micro minerals. Micro minerals for exchange.

Over 25 **SATELLITE DEALERS AND MINERAL COLLECTORS** will be selling minerals and related items from **ROOMS 168 THROUGH 191** in the north wing of the hotel. **COME, LOOK, BUY, or TRADE.**

THE FRIENDS OF MINERALOGY SYMPOSIUM

Sept. 29TH Saturday, 9 am to 9 pm and Sept. 30TH Sunday, 9 am to noon

THIS PORTION REQUIRES A FEE

\$38.00 per person paid before Sept. 15

\$45.00 per person paid at the door

\$15.00 students under age 25

payment includes access to all the speakers, live auction and includes dinner

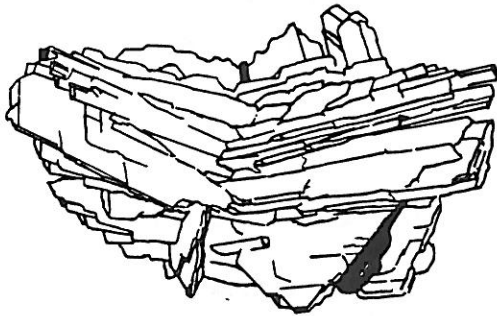
SPEAKERS INCLUDE

- Manuel Robbins - "Strange Fluorescence - Strange Color: the calcite of Terlingua, Texas"
"Beauty beyond description: words are not adequate to describe fluorescence. Are photos?"
- Jesse Fisher - "Recent work at the Rogerly Mine, Weardale, England"
"The gem and rare element pegmatites of Southern California"
- Don Newsome - "Fluorescent Minerals - from the simple to the sublime."
- Lanny Ream - "Progress on mining heulandite at Challis, Idaho"
- Sharleen Harvey - "Fluorescent minerals from Arizona's Purple Passion Mine and the Hogan Claim"

Join us at the **RED LION INN**, 510 Kelso Drive, **KELSO, WASHINGTON** phone 360-636-4400 At Exit 39 just east of I-5
For more information contact Sharleen Harvey, 2309 SW 1st Ave., Portland, OR 97201 phone 503-248-4194 or 503-647-2418

SYMPOSIUM COMMITTEE 2001

Chair and facilities coordinator -
Sharleen Harvey
Speakers and program MC -
John Cornish
Dealers and satellite dealers -
Rudy Tschernich
Displays -
Sharleen Harvey
Auction -
Jim and Rusty Etwiler, others
Registration, packets, desk -
John Lindell, others
preregistration mail to John Lindell
Setup, teardown, audio-visual -
Wes Gannaway, others
Microminerals Chair -
Ray Hill
T-shirts design and production -
John and Kristin Lindell
Competitions -
Bob Meyer
Publicity -
Sharleen Harvey, others
Floor plan layout -
Ray Lasmanis
Security -
unnamed



5 days prior to leaving for this year's Tucson, John Cornish discovered the skull of a probable new species of fossil whale from the Oligocene sediments of Clallam County. Recovery of the specimen was completed on 2/28 (what were you doing when the big quake hit?) from the same beach where earlier FM and Cornish led Field Trips had taken place. The approximately 3 foot long skull is currently keeping John quite busy as he reconstructs it from approximately 300 individual pieces.

SYMPOSIUM COMPETITIONS

The two contests for the symposium will be a "Micro Rainbow" contest for the best suite of micro minerals based on colors of the rainbow and the Mineral Identification contest. There will be a \$25.00 prize for the winner of each contest.

"Micro-Rainbow" is a contest for the finest suite of micro minerals by color. Entries will consist of six (6) specimens of micro-minerals having their predominant color from the following categories: Red, Orange, Yellow, Green, Blue, Purple, Multi, and Wild Card. Other rules are as follows:

- 1) each specimen must be from a different category;
- 2) The color of the predominant mineral must match the category, however the judges will be instructed to give some latitude. For example, some Crocoite is reddish-orange. The judges will not mark an entry down as long as there is some reasonable basis to put the entry in its category.
- 3) The category will be clearly marked on the label.
- 4) The associated minerals and matrix do not have to match the predominant mineral category. In fact, contrasting colors are encouraged.
- 5) The "Multi" category must have more than one color category present. An example might be a Wulfenite (orange), Diotase (green), and Fluorite (purple), from Tiger, Arizona; or Copper (orange), Gold (yellow), Cuprite (red) and Malachite (green), from Bisbee, Arizona.
- 6) The "Wild-Card" is exactly that. Here can be entered a specimen from a duplicate category or from an "off-color" such as brown, white, grey, metallics, etc.
- 7) As always, the specimens must be "micro." That is, best appreciated under the stereoscopic microscope. The specimens do not have to be mounted or fit into any one size category (as long as they fit under the scope), but neat labeling and presentation are factors that will be considered.
- 8) Specimens will be judged by a panel of micro-mineral enthusiasts for quality, rareness, and colorfulness.

The mineral I.D contest has been very enjoyable for many who have participated. However, I am running low on specimens that are appropriate without being either too easy or too hard. Also, I do not want the contest to outlive its appeal. For that reason, I propose that this is the last year we have the contest, at least with my format and specimens. One thing I would like to do different. Contestants will be allowed from about noon on Saturday till 8:00 p.m for the mineral I.D.contest. Last year, some people had difficulty completing the contest in time.

Cheers, Bob Meyer

**PACIFIC NORTHWEST CHAPTER FRIENDS OF MINERALOGY
SYMPOSIUM - SEPTEMBER 29-30, 2000
RED LION INN, 510 Kelso Drive, Kelso, Washington 98626**

EXHIBIT REGISTRATION FORM

PLEASE PRINT OR TYPE

Date: _____

Name of Exhibitor: _____

Address: _____

Phone: _____ Fax: _____ Email _____

Title or brief description of exhibit: _____

_____ Will you furnish your own
case/cases? _____ If yes, give size and type of case: _____

If no, how many cases do you require? _____. If you do not have a case, PNWFM will furnish an approximate 22" deep x 46" wide x 23-3/4" high Federation style glass front case, with interior overhead lights. Do you need a fabric liner for the case? _____ (Most liners are in pastel shades or earth tones. You must furnish your own risers if needed. All exhibitors must supply clean, legible labels identifying all specimens exhibited.)

Setup/Takedown Times: Exhibits must be placed in the cases on Friday, September 22nd between 2:00 p.m. and 5:30 p.m. The exhibit floor opens to the public at 6:00 p.m. Exhibits cannot be removed before 12:00 noon on Sunday, September 24th and MUST be removed by 2:00 p.m. that day, NO EXCEPTIONS.

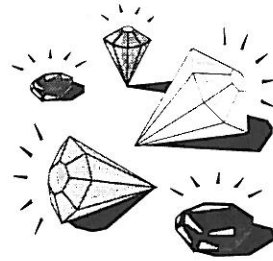
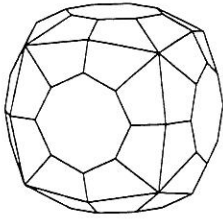
Opening of Cases: All of the cases are secured after setup. There will be no admittance to the cases during the show, except by permission of the exhibitor when there is a need to right a tipped-over specimen or replace a light bulb.

Insurance and Liability: PNWFM is unable to obtain insurance coverage for exhibitors. If you desire insurance protection, you must obtain your own insurance coverage. The Pacific Northwest Chapter of the Friends of Mineralogy, The Friends of Mineralogy, the Officers and Show Committee, and the Days Inn assume no responsibility for loss of or damage to the Exhibitor's property, materials, or specimens exhibited. The Exhibit Hall will be securely locked and have volunteer security on duty during the hours when the show is not open to the public.

Signature: _____ Title (if applicable): _____

Mail form no later than July 31st to: Sharleen Harvey, PNWFM Exhibits Chair, 2309 S.W. 1st Ave., #2142, Portland, OR 97201-5080

If more information needed, telephone Sharleen Harvey: 503-647-2418 or email to bill-sharleenharvey@worldnet.att.net.



Werner Lieber Photo Contest and Traveling Museum Exhibit

Sponsored by Friends of Mineralogy

A traveling Museum exhibit will be
created from the best photographs
submitted for the contest

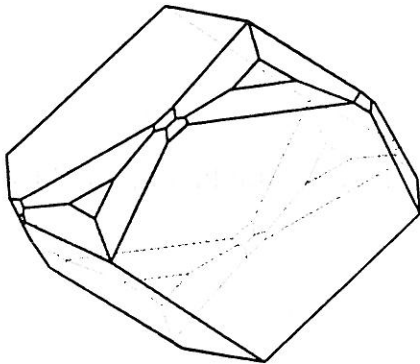
**Categories: Juniors, Amateur Adults--(a) Micro and (b) Macro Minerals,
Professionals, and Digital/Computer-Enhanced Photography**

Contest Rules:

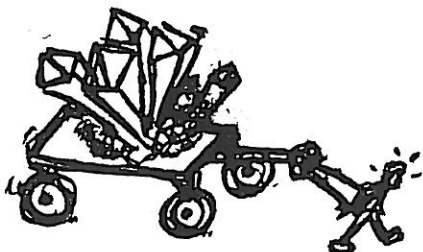
1. Matted 8"x10" print. Mat must be 11"x14".
2. The photo must be related to the contest theme:
African Minerals.
3. Each photo must have a caption with locality, bar scale or description of crystal size, photographer, category, and other information submitter deems relevant. Caption should be attached to back of mat.
4. Photos will be displayed at the 2002 Tucson Gem and Mineral Show. Photos will be judged by the FM board of directors during the annual board meeting. Winners will be announced at the FM annual meeting and awards presented at the TGMS Saturday night awards banquet.
5. All photos become the property of FM. Copyright will be retained by author, but FM has royalty free use.
6. A non-monetary award will be presented to the winners.
7. Contest deadline: November 1, 2001.
8. Mail submittals to Dr. Karen Wenrich, P.O. Box 5054, Golden, CO 80401--
(303) 278-1218 (Phone & Fax); email: CrystalsUL@aol.com.

All members are reminded to be selecting their auction donation specimens and to contact Jim Etwiler if they have any questions about delivery of the specimens prior to symposium or to bring them with them to the symposium. All specimens to be labeled with specie and location information.

* Rudy Tschernich, chair of the nominating committee reports that candidates have been found for each officer position. Elections this Fall will determine club officers for the next two year term. Any one wishing to run or wishing to nominate a willing candidate should contact Rudy to be placed on the ballot.



Far Out Fossils, Crystals and Minerals is the name of the 3-day Field Seminar conducted by John Cornish in addition to his geology ROCKS presentations at the Olympic Park Institute on the shores of Lake Crescent in Clallam County. This extremely popular Family event will be conducted during July 6-8th this year and John say's spaces are filling up fast. This was O.P.I.'s most popular Family Seminar last year. For more information go to <http://www.yni.org/opi/>



* Recent mailings by the Forest Service indicate that the new road plan for the Middle Fork of the Snoqualmie in King Co. WA will include grading and paving possibly as far as the Taylor River.

For more information on the Rogerley Mine and Jesse Fisher see <http://www.ukminingventures.com/>

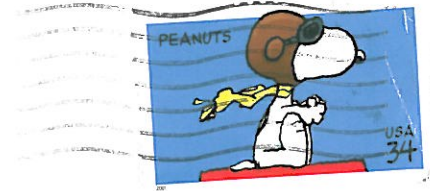
For a Diary of the 2000 Rogerley collecting season see <http://www.trinityminerals.com/rm/rm.shtml>

For more information on the Fluorescent Mineral Society see <http://www.uvminerals.com>

* Members were saddened to learn of the death of long time PNWFM member, Tony Sobolik on January 30th. He was 87.



PACIFIC
NORTHWEST
CHAPTER



John Lindell, Secretary
25714 268th Ave SE
Ravensdale, WA 98051



98038-7463 04

