

Pacific Northwest Chapter



NEWSLETTER

FEBRUARY 1995

PRESIDENT'S MESSAGE

The truly great thing we all share in as members of this Chapter the truly unifying thing we all have in common and benefit from as members of our Chapter is the straight and simple truth that says each and everyone of us is the Friends of Mineralogy, Pacific Northwest Chapter.

Our forefathers blessed us with a dream in 1970 and from that day to this in 1995 we as members of Friends of Mineralogy take breath and give life to the continuation of that dream.

With noble goals the dream was born. Our Pacific Northwest Chapter transcended the ethereal and became our regional embodiment of the dream September 3, 1972. Now almost 23 years later each and every one of us drawing breath and reading this newsletter gives life to this wonderful thing which is the Pacific Northwest Chapter of the Friends of Mineralogy.

Each of us is a very special part of this miraculous thing and like those before us we each receive pleasure from the many physical expressions of the dream. There are newsletters, symposia, fieldtrips and gatherings. All of these things and many more are our bounty.

But greater yet is that ultimate gift we receive when through grace of character we give of ourselves and volunteer our own unique strengths and insights to the Chapter for the benefit of the Chapter and our dream.

Many are the times when the few have worked for the good of the many, and this is good, but least the few become too few, isn't it time we can all light the spark and blaze the path towards the Pacific Northwest Chapter's brightest future yet! Dare to dream, participate, get involved.

Can you come to a meeting?

Can you lead a field trip?

Can you be a speaker or do you know a speaker?

Can you stand on a committee?

Would you like to host an open house?

Do you have an idea you'd like to implement?

Would you like to write a letter for the newsletter?

Would you like to be an officer?

It took people willing to keep the dream alive, willing to put effort into keeping the dream alive. For their sakes and our own, let's do our part to keep the dream strong and healthy. For today and for years to come. P.S. It's even fun!

Quote from F.M. Bylaws:

The key to the success of F.M. will be the individual enthusiasm channeled into productive areas and the synergism that results from the close association of people with common goals.

F.M. is only as active as it's members make it.

Past President John Lindell April 1992Donate some time. Find a part of this organization that you feel is especially important or simply enjoyable and participate!

See you at our next function!

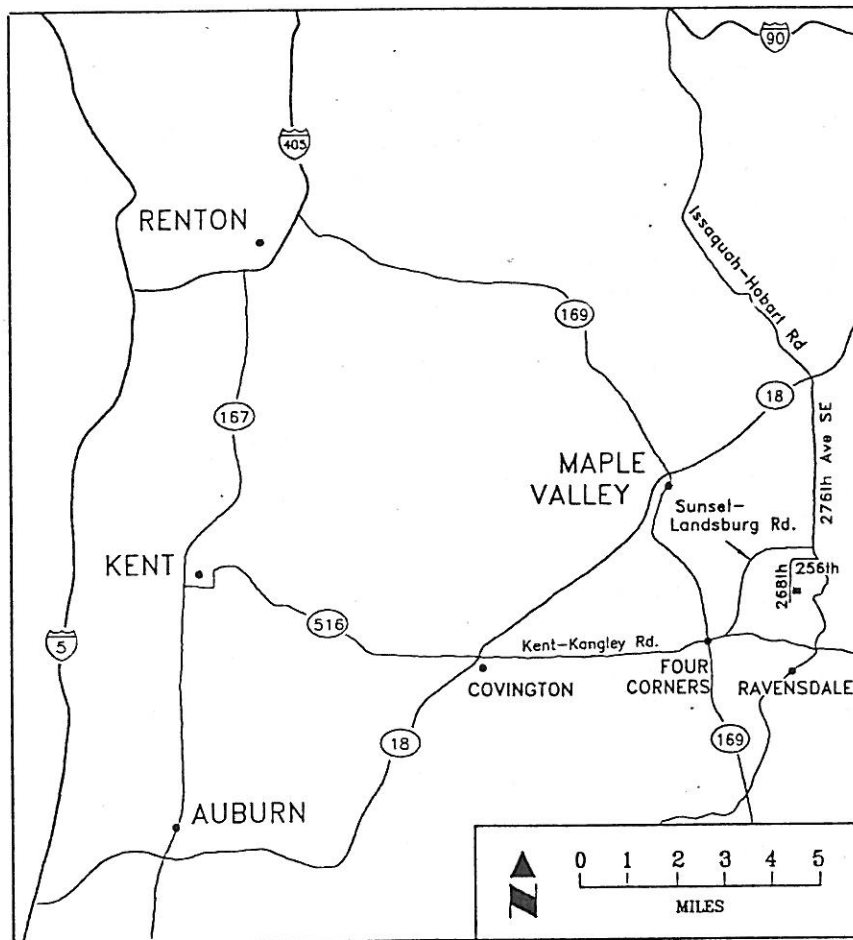
John Cornish

CALANDAR OF EVENTS

Feb. 9-12 Tucson show and Friends of Mineralogy National meeting.

Feb. 17, 18th F.M. member Rob Belcher will be hosting his 6th annual Mineral Mayhem in Richmond B.C. A scheduled talk, video and slide presentation will be offered on Friday night at 8:00 pm and Saturday afternoon at 2:00 pm by noted Victoria jeweler and gemologist Tony de Goutiere on Inclusions in Crystals and Gemstones. As usual food and beverages will be supplied. This will happen at the Stay'NSave Motor Inn. Rooms 101, 102, 103 at 10551 St. Edwards Drive. Telephone (604) 273-3311. From Vancouver take the #4 Road exit from Hwy. 99, turn left on Gamble, left on St. Edwards. From points South take exit 39 (Bridgeport) from Hwy. 99, turn right onto St. Edwards.

March 19th Collecting field trip to the Green River Gorge realgar locality near Black Diamond, Wa. Meet at John and Kristin Lindell's, 25714 268th Ave. S.E. Ravensdale, Wa. Between 9:00 and 10:00 am We will be leaving by car pool from there promptly at 10:00 am. Depending on the experience and the size of the group, we will either visit the Royal Reward mine or the Okay coal deposit across the river. A short hike will be necessary at either area so bring sturdy shoes and a day pack. This is heavy sledge and chisel work, but some material may be gathered along the river bank. Bring a lunch and beverages. Questions? - call John at (206) 226-6395 days or (206) 432-4939 evenings.



April 23rd Keith Ikerd has offered to host a collecting trip into Robertson Pit. Materials to collect are Naturalite, Calcite, Analcime and pyrite. Please expect bad weather and lots of work with sledges, bars and chisels. Last report was that the quarry had not been worked in sometime and that collecting would be difficult at best. We'll meet at the quarry. (See map next page)

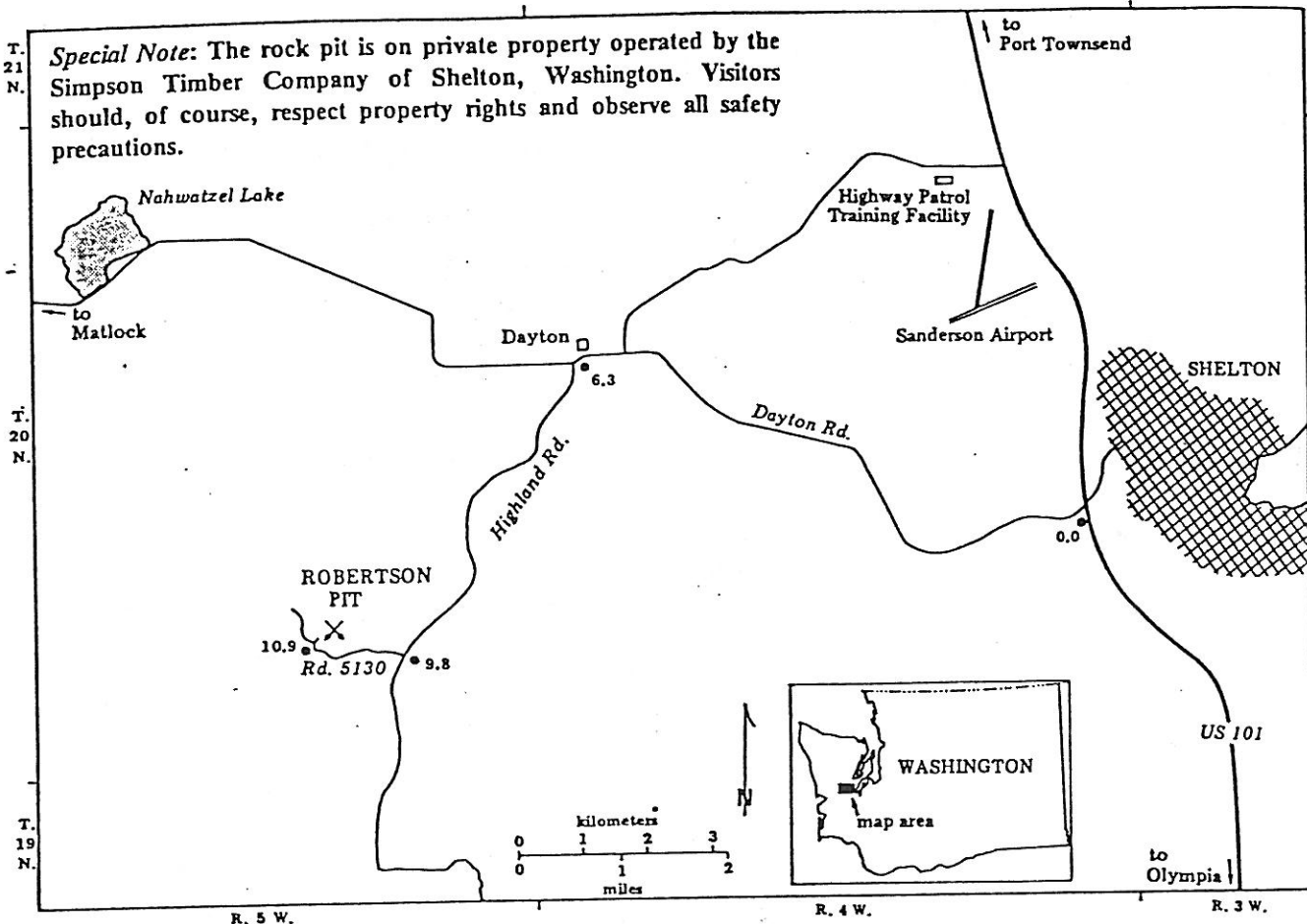
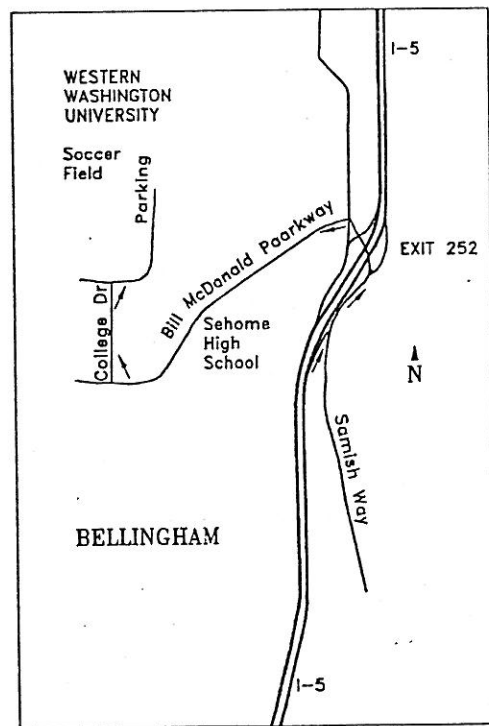


Figure 1: Robertson Pit location map.

April 29, 1995 The Bellingham meeting will be held on the Western Washington University Campus, in the Environmental Studies Center, Room 213. The meeting will start at 1:00 pm to make it easier for those who have long drives. After the meeting, George Muster will do a show and tell of the Geology Department. Field trips are being planned for Sunday to Blanchard Mtn. where the unusual mineral STILPNOMELANE can be found and also to Walker Valley. Further information will be available at the meeting. From the south take exit 252 off I-5, that is the Samish Way and Western Washington University exit. Follow Samish Way and make a left onto Bill McDonald Parkway. Make a right turn onto S. College Dr. and follow it to Parking Lot 31G, by the soccer fields.



May 6, 1995 The Northwest Micro Mineral Study Group will be having their spring meeting in the Clark County P.U.D. bldg. near Fort Vancouver. Take exit 1-C off of I-5 in Vancouver, Washington. The P.U.D. Bldg. is right next to the freeway just S.E. of the interchange. The meeting starts at 9:30 am and goes all day with a potluck dinner that evening.

JEWELRY
&
MINERALS



GEMS
&
FOSSILS

PUGET SOUND JEWELRY, GEM & MINERAL SHOW

May 12-14, 1995 Puget Sound Regional Show in Puyallup at the Fairgrounds. Members are encouraged to contact Mary Foster at (206) 362-0395 or Kathryn Foster at (206) 329-6937 if they would like to participate by volunteering time or putting in a display case.

EXPO HALL, THE PUYALLUP FAIRGROUND
MERIDIAN & 9th AVE.
PUYALLUP, WASHINGTON

MAY 12, 13, 14 1995

DEALERS

JEWELRY
GEMS
MINERALS
OPAL
FOSSILS
SEMI-PRECIOUS
STONES

ADMISSION

ADULT \$5.00
JUNIOR \$2.00
SENIOR
55 & OLDER \$4.00

UNDER 12 FREE WITH ADULT

DEMONSTRATIONS

FACETING GEM STONES
MAKING GLASS BEADS
ENAMELING
ROCK PAINTING
MAKING CABOCHONS

FREE PARKING

VIDEO SHOWS
SLIDE SHOWS

SHOW TIMES

FRIDAY 10:00 A.M. - 6:00 P.M.
SATURDAY 10:00 A.M. - 6:00 P.M.
SUNDAY 10:00 A.M. - 5:00 P.M.

SCHOOL GROUPS FREE
FRIDAY ONLY

...FLUORESCENT ROOM WATER DISPLAY...
JEWELRY, GEM & MINERAL DISPLAYS

FM EARNS \$105.00 AT THE PUGET SOUND GEM AND MINERAL SHOW

It is time again to plan for our participation in the 1995 Puget Sound Gem & Mineral Show. This year we will be back at the Puyallup Fair Grounds. Parking will be free at the fair grounds and we encourage you to bring your campers and make a field trip out of the show. The show will be held Friday thru Sunday May 12, 13 & 14. Hours will be 10:00am - 6:00pm Friday and Saturday and 10:00am - 5:00pm on Sunday. Setup will be on Thursday May 11, hours to be determined.

As a member club we are eligible to receive a portion of the Show profit based on the number of credits earned. One credit is equal to two hours of volunteer work. Two credits are given for EACH club case. As a result of our participation in last years show Friends of Mineralogy earned 42 credits, which got us \$105!

Volunteers will be needed to ensure a smooth running, profit making Show. Most important are setup (Thursday) and take down (Sunday) of regional cases and furniture. Volunteers are also needed all days for security, information desk, ticket sales, audio visual shows, and juniors (helping with the children's activities). Please contact me if you are willing to put in a display case and/or volunteer. Let me know the activities and hours you can help out.

Thank you, Kathryn Foster
2230 Yale Ave. E. Seattle, WA 98102 (206) 329-6937

June 24-30, 1995 This one's still in the works folks, so bear with us. this will be our collecting odyssey for the summer this year. this trip will start in Washington and end somewhere in Oregon. Rudy Tschernich will lead the Washington leg of our trip. We'll be going to Elk Mtn., Wolf Point and the 5700 road localities near Mt. St. Helens. We'll camp out and enjoy some of Washington's best high elevation Zeolite collecting. From here we'll be the guests of Bill and Linda Leach and the Good Earth Minerals. We'll view their collection of fantastic self collected materials and enjoy their hospitality as we look through the inventory of specimens they'll offer at special field trip prices through their mineral business Good Earth Minerals. After this Bill will be our second field trip host and will take us into some of his favorite Oregon mineral localities. Mark this one on your calenders and we'll let you know more about it as the trip developes.

July 22, 23 1995 John and Gloria Cornish will host a trip into the Twin rivers quarry to collect Oligocene fossils and calcite. This is the quarry where the delightful crystalized clams and the "whale" have come from. Collecting is very easy and all ages accessible. On Saturday night everyone will be invited to see the Cornish's collection of self collected materials. Sunday we'll all meet up at the Cornish's and drive to and collect at the Old Shine Quarry/Beaver Valley Quarry near Hood Canal for Zeolites and Calcites. More details will come in the next newsletter.

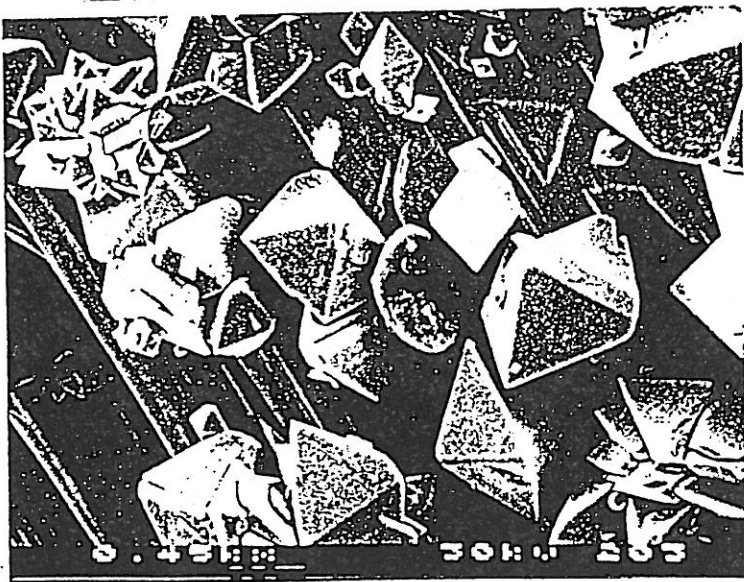
August 12-14 1995 Our 6th annual Washington Pass clean-up. We've seen this field trip become one of our most popular events of the year, so come on out and we'll clean up the area, collect some rare minerals and tell tall tales around a campfires light. Washington Pass is on state route 20, (the North Cascades Highway).

September 23 -25 1995 The 21st Annual Pacific Northwest Friends of Mineralogy Symposium at the Sherwood Inn. The Symposium theme this year will be "Classic Mineral Localities II"

November 4, 1995 The Northwest Micro Mineral Study Group will be having their meeting in Vancouver, Washington at the P.U.D. building (See May 6 for time and location.).

MINUTES OF THE JANUARY 14, 1995 MEETING Clark County P.U.D., Vancouver, WA

The first meeting of the year was opened at 11 am with a presentation by Ray Lasmanis on the mineralogy of the Vanadinite mine, Mohave County, Arizona. He showed slides of the locality and Dan Behnke photos of microcrystals (collected by Ray in February, 1994). Seen were excellent crystals of cerussite, descloizite (cuprian), vanadinite, wulfenite, and the rare mineral vauquelinite. It was noted that the vauquelinite was identified by Don Howard of the Department of Physics, Portland State University. For a EDS photo by Don Howard of descloizite crystals on vanadinite, see Figure 1. A article on the Vanadinite mine has been published in Rocks & Minerals, January/February, 1995.



DESCLOIZITE XLS
ON VANADINITE

VANADINITE MINE
MOHAVE CO. AZ.

President John Cornish followed with a brief description of his collecting activities during 1994. He noted that the hole he had dug during the FM field trip to the Sally Ann was deepened just several feet the following week by another collector who encountered some of the best quartz crystals ever found at the Montana locality. Thon also broght and showed several plates and single chevron twins from the Red Cliff bat cave clacite crystal locality near Bozeman.

John Gladwell had with him a new find of attractive yellowish rhombohedral calcite crystals with analcime on matrix from a quarry near McMinnville, Yamhill County, Oregon. The calcite fluoresces white with a slight bluish tint. The material was collected during December, 1994.

After lunch, John Cornish called the business meeting to order. Treasurer Cheryl Burnell gave a overview of our 1994 expenditures as compared against the budget approved January 8th, 1994 (see table). We concluded the year on track except for the underexpenditure for outreach. That came about because the planned educational activities in conjunction with the 1994 Puget Sound Jewelry, Gem & Mineral Show did not take place. Cheryl also noted that the final costs have been paid for our 1994 symposium. We spent \$4,184.30 and took in receipts of \$4,777.50 giving us a profit of \$593.20 (see financial report). Cheryl proposed that we adopt the same budget for 1995 as in 1994 (seconded by Ray Lasmanis). In the discussion that followed it was pointed out that the outreach line item should not be included unless we had some specific plans for the funds. John Lindell amended the above motion to delete the outreach line item. The 1995 budget was thus approved (see table).

BUDGET ANALYSIS TABLE

| | Proposed '94 expend. | Actual '94 expend. | 1995 budget |
|-------------------------------------|-------------------------|-----------------------|----------------|
| Admin (phone, supplies, etc.) | | | |
| President | \$200.00 | \$174.77 | \$200.00 |
| V. President | 25.00 | -0- | 25.00 |
| Secretary | 75.00 | 25.37 | 75.00 |
| Treasurer | 25.00 | -0- | 25.00 |
| Bank charges | 100.00 | 62.68 | 100.00 |
| Mailings/ inc. newsletter | 300.00 | 204.81 | 300.00 |
| National dues | 550.00 | 565.00 | 550.00 |
| Noble V. Witt award | 50.00 | 26.00 | 50.00 |
| Outreach & membership drive | 325.00 | -0-- | 0- |

1994 SYMPOSIUM FINANCIAL REPORT

| | |
|-------------------------------------|-----------------|
| Symposium expenses | |
| T Shirts | \$360.00 |
| Speaker expenses (travel) | 829.44 |
| Rooms | 402.83 |
| Meals | 2,522.03 |
| Reg. refund | 17.00 |
| NSF check | 53.00 |
| Total expenses | 4,184.30 |
| Symposium deposits | <u>4,777.50</u> |
| Total income | 593.20 |

Cheryl reported that our chapter balance sheet looks very good (see Treasurer's report). As of January we will have our balance in a interest bearing account with only \$100.00 in checking. Funds will be transferred into checking only when needed to pay bills. This will give us interest and there are no per check charges, only the initial charge for printing them. Also, there will not be a monthly fee for the checking account saving us more money.

TREASURER'S REPORT
January 14, 1995

| | |
|--------------------------------|--------------|
| Beginning balance | \$ 3,883.03 |
| Deposits | |
| Dues | 315.00 |
| Seattle regional show | 105.00 |
| Misc(shirts, mag, etc) | <u>80.50</u> |
| Total deposits | 500.50 |
| Expenses | |
| New checks | 18.45 |
| National dues | 105.00 |
| Sherwood (Cornish room) | 109.90 |
| NSF check | 53.00 |
| Speaker exp.(P.Richards) | 23.94 |
| Postage | <u>7.25</u> |
| Total expenses | 317.54 |
| Ending balance | \$ 4,065.99 |

Following a discussion of fiscal matters, John Cornish brought up the idea of having regional representatives whose names would be imprinted on a business card. We could then distribute these at various shows and meetings. Potential new members would then have an initial contact for additional information. Jon Gladwell volunteered to represent Oregon and John Lindell for Washington state.

Next followed a lengthy discussion about the 1995 and 1996 symposia. First, the theme was decided for the 1995 symposium to be held at the Sherwood in Tacoma September 22 - 24. By consensus we decided on "Classic Mineral Localities". It was also agreed that the Sunday morning business meeting during the symposium should be reinstated. Second, a discussion initiated during the 1994 symposium was continued on whether to shift the symposium to the Portland area in 1996. We may be able to draw into the chapter Oregon collectors that presently are not members. On the other hand, there would be some Washington collectors who would not drive down to Portland for a symposium - however, most would. The subject of costs came up. Presently we are making a modest profit with each symposium since we get the meeting rooms free (by purchasing meals). Also, Cheryl has negotiated a deal with the Sherwood to hold the room prices at around \$50.00 regardless of the occupancy numbers. Can we secure such facilities at a reasonable price in the Vancouver/Portland area? Sharleen Harvey looked at several facilities in the Portland area and they were significantly more expensive. In fact the costs for the meeting room alone would break our bank account. But, there is still interest in exploring the option of having a Portland meeting. Jon Gladwell volunteered to investigate various facilities as well as their cost and report back to the executive at our next meeting. There was also discussion of having, instead, a spring 1996 mini-symposium in the Portland area. No decision was made

for such a option. It was pointed out that the only reason the Coeur d'Alene spring symposium a number of years ago was a success is because of the very hard individual effort by Lanny Ream.

The present term for officers will expire in September. Ray Lasmanis chose not to run again but did volunteer to head up the nominating committee with assistance from John Lindell. We have potential candidates for Treasurer, Vice President, and possibly Secretary. We do need candidate(s) for President. Anyone wishing to contribute to our chapter's well being by running for office, please contact Ray Lasmanis or John Lindell.

Jack Frasi's Open House

A number of us gathered on November 20, 1994 at Jack Frasi's Earthlight Minerals in downtown Kirkland and were hosted to a wonderful evening of minerals, good company, terrific food, beverages and fantastic savings.

Jack really rolled out the red carpet for us and was the perfect host as he relaxed and talked minerals with all of us there. It seems that most all of us managed to find a few pieces we couldn't live without, this oof course meaning that most of us bought Christmas presents for ourselves!

A big Thank You from all oof us Jack for having us over. We had a great time.

HEY, AGATES ARE PEOPLE TOO

OK, now that I have your attention, I want to inform you of a book that Ray Lasmanis Gave me for Christmas. The book is called Banded Agates--Origins and Inclusions by Roger K. Pabia of the Conservation and Survey Division of the University of Nebraska-Lincoln and Andrejs Zarins of the Nebraska Department of Environmental Quality. It's released as Educational Circular No. 12 by the University.

As the Chapter's "token" rockhound I have always been disappointed with the lack of good scientific information relating to the origins and formation of agates. Not any more! This book contains the information I've been looking for for years. Topics range from tectonic and stratigraphic settings, geochemistry and the chronology of agate formation (forget what you thought you knew!) to the why and how of band formation (again, forget what you thought you knew!). There is a section on pre- and post-banding inclusions and much, much more.

The book is the result of a study of over 15,000 specimens from 18 localities and 5 stratigraphic settings; very well summarized in a table. There are over 50 figures in full color, including some excellent photographs of exquisite agate specimens. All of the figures have very explanatory captions. There is an excellent glossary of terms, as well as an exhaustive list of references for further study.

I've read this book cover-to-cover twice now and have decided that it is without a doubt the best book on agates I have ever encountered. I give this book "2 terminations up" and think that you will too.

I don't know the price, but the book is available from:

The Conservation and Survey Division,
University of Nebraska-Lincoln,
Lincoln, Nebraska 68588-0517

Good reading,

Carl Harris

Editorial: The following article is from a recent brochure published by Weyerhaeuser. It states a new policy on using their lands. For information not covered, please call 1-800-433-3911. If you are locked out after hours, please call 924-7999.

For years, people have been visiting our forests to hike, fish and hunt. And usually folks have been so captivated by the experience, they've left their hearts behind.

Unfortunately, for a thoughtless few, that's not all they've left. The same forest that's home to eagles and deer has recently become home to everything from bottles to refrigerators. So much so that in certain places we can't tell the forest from the trash.

That's not all. Signs have been destroyed, gates and equipment vandalized and water polluted. If left unchecked, such vandalism will threaten, if not destroy, a productive forest that's home to a rich variety of plant and animal life. And create numerous hazards for our employees and visitors. As a result, we've been forced to do something entirely against our nature. While we still not close our forest to the general public, we will have to charge a fee to any motorized vehicle wishing access to our Snoqualmie or White River Tree Farms. These fees will help offset the costs of cleaning up these areas and repairing property and equipment. Since the fees only apply to motorized vehicles, hikers are still welcome anytime these two forest are open.

The Snoqualmie and White River forest access fee. We feel it's a small price to pay for protecting a very precious resource. We hope you agree.

ACCESS PERMIT GENERAL RULES

1. Access by the public in *motorized* vehicles now requires a special permit that should be prominently displayed in the front window of the vehicle.

2. The public still has access to the tree farms by *nonmotorized* means at any time, with the exception of areas marked as hazard zones, or in the event of fire danger or other hazardous situations.

3. The forest access fee policy applies to weekends only. During the week, the forests remains closed, except for a limited period in the fall (see below).

Cost: \$50 per vehicle, valid for one year, June 1 -- May 31.

When required: Anytime motorized access is desired.

Hours: One hour before sunrise to one hour after sunset, as determined by State Wildlife Regulations. From September 1 through December 15, there will be limited access during weekdays between the hours of 3:30 p.m. and one hour after sunset.

Area Covered: Snoqualmie and White River Tree Farms in the Cascade North Region.

Entry/Exit Points: Access by motorized vehicles is limited to the following entry and exit points. (see map---page 7 of this issue)

Snoqualmie: Spur 10 and Griffin Creek.

White River: Grass Mountain Road & Hwy 410 Scale Shack.

Where Purchased: Designated local vendors in Buckley, Enumclaw, Issaquah, North Bend and Snoqualmie. For a more complete list, please call 1-800-433-3911.

Who Needs a Permit: Anyone who wants motorized access to the Snoqualmie and White River Tree Farms.

4. Access to the tree farms will be limited in the event of fire danger or other hazardous conditions.

5. No camping or fires on the tree farms are allowed, nor are motorcycles or ATVs.

6. Weyerhaeuser security contractors will check for permits on tree farms. Weyerhaeuser reserves the right to pursue legal action against those people who do not comply with access or other rules.



PACIFIC
NORTHWEST
CHAPTER

Keith Ikerd, Secretary
9110 Tilley Rd. S.W.
Olympia, Wa. 98512-9179



BOB MEYER
16239 NE 18TH
BELLEVUE WA 98008

