

**Pacific Northwest
Chapter**



NEWSLETTER

AUGUST 1995

President- John Cornish, 40 Cedar Glen Lane, Port Angeles, Wa. 98362-9126, (360) 457-7630.
Vice Pres.- Raymond Lasmanis, 155-800 Sleater Kinney SE, Lacey, Wa. 98503-1127, (360) 491-6893.
Secretary- Keith Ikerd, 9110 Tilley Rd. SE, Olympia, Wa. 98512-9179, (360) 754-6510.
Treasurer- Cheryl Burchim, PO Box 77, Ocean Park, Wa. 98640-0077, (360) 665-6426.
Dues-\$15.00 per year, (National = \$5.00 and PNW Chapter = \$10.00). Please send dues to Treasurer.

Presidents outgoing letter

Dear friends and fellow collectors,

Our Symposium's going to be here in just over one months time and with it will come my last oppertunity to share in your company as your President. I've very much enjoyed my term and have worked hard trying to be effective in this capacity. I have personally experienced the best of times (Montana field trip) and the worst of times (Oregon trip), yet always I had that drive to stay true, both to F.M. and to myself. Many of you out there through your dedication and willingness to help and participate made it all seem just a little bit easier. You're all the real heroes in my book and long will I cherish the memories of our times together.

Sincerely yours,

John Cornish

CALENDER OF EVENTS

Sept. 22-24, 1995 The 21st Annual Pacific Northwest Friends of Mineralogy Symposium at the Sherwood Inn. The Symposium theme this year will be "Classic Mineral Localities II".

Oct. 7-9, 1995 The Montana Crystal Collectors Rendezvous will be held in Missoula, Montana this year. Bryan Lee's of the Collector's Edge will be the Saturday evening dinner speaker. The subject will be the Rhodochrosites and mining/collecting efforts at the Sweet Home mine. Friday evening there will be an Open House at Mike and Pat Gray's home. Saturday will be the main gathering with displays, trading and buying/selling of specimens. Sunday there will be a field trip and the Miller Calcite collection will be open for viewing. For information call Bryant Harris at (406) 251-4419.

Nov. 11th, 1995 The Northwest Micro Mineral Study Group will be having their fall meeting in Vancouver, Washington at the PUD building. (See the May newsletter for directions).

July 22, 23, 1995 Field Trip

On the weekend of July 22nd and 23rd John and Gloria Cornish conducted a field trip for the FM members to the fossil locality at the clay pit at Twin Rivers. Reynold and Rose Mae Bork, Gary, Karen, and Mathew Hinderman, Gloria and John Cornish, Wes and Jason Gannaway, Mary Foster, Elizabeth Ralls, Jim Etwiler, Rusty Williamson, Doug Merson, Dwight Larson, and Keith, Dan, Randy, Tammie, and Leah Ikerd collected Oligocene fossils. Everyone found something nice, including several large Galeodea snails, Toredon wood, and a couple of sand dollars. On Saturday night the Cornishes hosted a barbeque and a potluck and everyone viewed the Cornish collection. On Sunday the Cornishes conducted a field trip to Beaver Valley and the old Shine Quarry for zeolites and calcites. The find of the day was a superb 2-3" pocket of yellow acicular calcite crystals opened by Rosemae Bork. Everyone had a great time and much thanks to John and Gloria.

Wes Gannaway

SIXTH ANNUAL FRIENDS OF MINERALOGY WASHINGTON PASS CLEAN UP AND COLLECTING WEEKEND, August 11-13, 1995

by Raymond Lasmanis

This year we had an excellent turnout of members and guests. In total, over the weekend, 32 people participated in the activities. We had two guests arrive from British Columbia and signed on as new members of FM.

Cheryl Burchim, FM Secretary, had everything well organized with the U.S. Forest Service. Eight campsites had been reserved at the Klipchuck campground and each site was signed for member's that had pre-registered. Garbage bags and gloves were provided by the Forest Service so that Saturday morning, with map assignments in hand, everyone was ready to go. We covered State Route 20 from Rainy Pass to the Early Winters campground. As evidenced by the full bags along this stretch of the National North Cascades Scenic Highway, our members did a fantastic job in keeping this beautiful part of the state attractive to all. Of all the things found, probably the most unusual was a smashed hot tub. A old 35 mm Kodak camera and a telephone answering machine at the base of the Washington Pass overlook probably tied for second place.

The remaining part of Saturday and Sunday was spent collecting minerals at the Silver Star pullout, Mile Post 164, and the base of Liberty Bell Mountain. Bob Boggs and Randy Becker were able to act as guides to the large number of FM members visiting the Golden Horn batholith for the first time. Saturday night, with short wave UV lamps in hand, we were able to collect, at the Silver Star pullout, fluorescent feldspar, zektzerite, and opaline silica.

A Washington Pass update will be given by Randy Becker at our 21st Annual Mineralogical Symposium in Tacoma September 22nd through the 24th.

THE ROCKHOUNDS DREAM
by Norman Steele

Formation and Maintenance of the Northwest Lapidary Arts and Mineral Museum

In 1973 a group of dedicated Rockhounds were wondering what might happen to a collection of someone whose heirs obviously had no interest in maintaining it as a collection. Why not form a group to take care of situations like this? There ought to be a museum to keep these things so everyone in the future can enjoy them also. Some fine crystals were already becoming difficult to find. Olive Colhour's intarsias were moving out of town, Andre Dube's carvings faced an uncertain future as well as the "mining camp" diorama, and many fine lapidary items had already been lost.

The upshot of the discussions was that they decided to try to do something about it. They drew up a set of by-laws, for a "museum group" called the Seattle Regional Gem & Mineral Museum Society, elected officers, and were soon registered with Washington state as a non-profit organization dedicated to preserving the best examples of Natural beauty as well as Lapidary items and using these items for educational purposes. In that original group we had Bob Brown who later left the "Museum" his entire collection and his sister Katherine, Norman Steele, Bob Ross, Dan and Sarah Capps, Nelles T. and Delena Fairley, Wayne and Eleanor Hadley, Harold Wilkerson, Vern Piske, and Dusty Shears. From the first the hope was that somehow a space would become available to house the collections, but the small group began to see that it would take a larger organization to accomplish their mission. In 1974 they took their proposition to the Regional Show Committee and asked the representatives to take the invitation home to their clubs to join in this worthwhile effort. Most of the clubs (there were 15 at the time) were enthusiastic and it seemed a home would soon be found for present and future acquisitions.

About 1982 hope was high. since there was a nice building on N 85th Street that would have done nicely and some of the members traveled around the state collecting pledges from club members. Phyllis Jewell was prominent in this effort. However, before half the amount needed had been raised, someone else outbid us and the pledges were never called in. Then someone came up with the idea to buy a used school bus (or a truck) and convert it into a traveling museum, but there wasn't enough support for that idea and it too died.

When Seattle Regional shows were drawing a regular profit, several times the Seattle Regional Show Committee voted to support the museum with funds. There were personal contributions from individuals such as Marilyn McCurtain, Bob Brown, and Norman Steele. There were, also, club contributions, mostly in the form of memorials. But whatever the funds collected, they were just about enough to take care of storage facilities. Little progress has been made on the "building fund".

Even without a building the Museum Society was determined to live up to its promise to be an educational force in the community. One of the projects that was carried on for about 12 years was the soapstone carving activity at the Science Center during the Christmas vacation from school. This activity was welcomed enthusiastically by the Science Center management and the Kids, who would be lined up outside the door before opening time and the spaces would be filled and refilled all day. The Museum Society provided the soapstone, tools, and supervision while the Science Center Management provided an area big enough to permit 15 to 20 kids to work around tables. Bob Ross always provided buckets of tumbled stones that were given away to the kids. Eventually some of the parents got concerned about dust (similar to asbestos) from soapstone, the Center needed the space for other purposes, and it became difficult to find enough soapstone to keep up with the kids. So the activity became just a memory. Soapstone carving at the Seattle Regional Gem & Mineral Show was continued for a time, but eventually it became too difficult to keep reliable sources for the soapstone.

By this time the Museum Society had managed to get a commercial dry storage lined up for the collections we had been given. However, we were still limited to showing displays at the Regional

Shows and whatever club shows invited us. May Wymore came up with an idea that we might be welcome to put a display at the capitol in Olympia. So Marilyn McCurtain and May went down to check. The people in the General Administration Building were very happy to have the displays put in and the public loved them. We set up a two month schedule to renew the displays and invited clubs around the state to bring their material for display also. For nearly two years everything went well, but finally someone found a way to break into one of the cases and steal several small but valuable items. The government refused to take any responsibility for the safety of the displays although it was in their cases in their building, so we did not renew the contract and had to stop that activity, too.

Money to pay the rent of storage of materials has been a problem ever since we first began receiving donations. In the early 1980's several attempts to write a grant proposal to help support a home for museum displays were attempted, but none of the proposals worked out. From the beginning we tried to maintain two representatives from each member club, but attrition by illness or death took place and many of the clubs simply did not replace their representative. Fewer and fewer people came to the board meetings. When the Historian died we lost most of our printed record, including minutes, when the executor did not want to bother going through papers he did not understand. It was sort of a "Catch 22" as more dropped out, less got done, and as less got done, more dropped out. Mostly the clubs never formally said they quit, they just stopped sending representatives to the board meeting.

So now we're down to putting displays in a few shows, keeping a computerized listing of all the collections, taking part in Science Fairs, giving educational programs to whatever schools are interested in rocks, helping schools to start little rock clubs and paying \$360 a month for locker rent. Fund raising activities consist of making lapidary and other items to sell at rock shows and craft fairs, an annual "yard sale" to convert unneeded equipment and rocks to money that can be used to pay the rent. Many people and clubs seem to say in effect, "*We would love to help with the museum, but where is it? Put it into a building and we will come.*" They do not seem to understand that it will take many more people working than just the eight diehards active now to get the dream of a workable lapidary and mineral museum in our area.

Today there still is an active Seattle Regional Gem & Museum Society dedicated to trying to form a viable Northwest Lapidary arts and Mineral Museum. Meetings are bi-monthly on the second Wednesday except in mid-summer. The ~~last~~ major exhibit ~~was~~ at the Puget Sound Gem and Mineral Show at Puyallup on 12, 13, & 14 May 1995.

Dear Bulletin Editor,

It has come to our attention many people do not know about our Museum any more so could you please print this article in your next bulletin? Thank you very much.

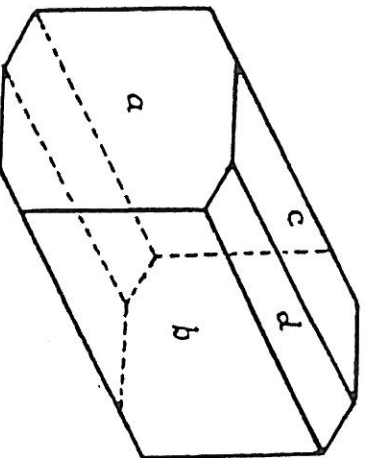
PACIFIC NORTHWEST CHAPTER
FRIENDS OF MINERALOGY

presents:

THE 21st ANNUAL
MINERALOGICAL
SYMPOSIUM

featuring:

CLASSIC MINERAL
LOCALITIES II



Graemite Crystal
Cole Shaft - Bisbee, Arizona

SEPTEMBER 22, 23 & 24 1995

Sherwood Inn
8402 South Hosner
Tacoma, Wa. 98444
(206) 535-2800

PROGRAM

FRIDAY, SEPT. 22

- 1:00 pm Display and dealer set-up.
- 5:00 pm Dealers and main floor open to the general public for \$3.00 at the door. Also satellite dealers, 11:00 pm trading and socializing.

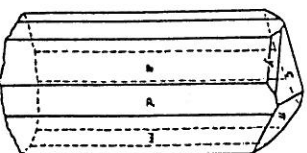
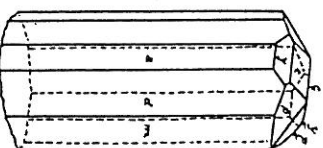
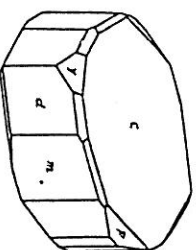
SATURDAY, SEPT. 23

- 9:30 am The famous Red Cloud mine, Arizona.
by George Godas
- 10:30 am Overview of recent mineral collecting in Arizona.
by George Godas
- 11:00 am One year in the life of a collector.
by Raymond Lasmanis
- 11:30 am Free time to socialize and visit with dealers. Also, first silent auction item open for bids at this time.
- 12:30 pm FM Lunch is served.
- 2:00 pm Photo slide competition.
- 2:30 pm History of Bisbee, Arizona.
by Richard Graeme
- 3:00 pm Geology and mineralogy of Bisbee, Arizona
by Richard Graeme
- 4:00 pm Free time. Also, second silent auction open for bids.
- 5:30 pm FM Buffet Dinner Banquet with no-host bar. Dessert program featuring the presentation of the Noble V. Witt Outstanding Service Award, and a live bid FM Benefit Auction.

- 7:30 pm Free time to socialize and visit dealers. Displays and floor dealers open to the general public for \$3.00 at the door.
Micromount room open for viewing and trading.

SUNDAY, SEPT. 24

- 9:30 am Gemstones and their inclusions.
by Anthony de Goutière
- 10:30 am Washington Pass update
by Randy Becker
- 11:00 am A classic mineral locality in the Northwest
by Lanny Reom
- 11:30 am Friends of Mineralogy business meeting
- 12:00 noon Symposium ends.



Brochantite Crystals
Shatluck Mine - Bisbee, Arizona

SPEAKER BIOGRAPHIES

RICHARD W. GRAEME is the foremost expert on the history, geology, and mineralogy of Bisbee, Arizona. Based on more than 25 years of field observations and the study of thousands of specimens in many collections, Richard W. Graeme authored the classic *Mineralogical Record* issue of *Bisbee* (Volume 12, No. 5, September-October, 1981). He was employed by the Phelps Dodge Corporation at the Copper Queen mine in Bisbee. Mr. Graeme is the President of Mining Remedial Recovery Co. and is currently working in Mexico.

GEORGE GODAS is one of the most successful and highly respected field collectors in the American Southwest. He is currently working the Red Cloud mine under an arrangement with its present owners. He also owns and is working the Pure Potential and Western Union claims and with Scott Lewis recently purchased the famous "79" mine in Arizona. George Godas has a MA in philosophy from the University of Arizona. He teaches philosophy at the Maricopa Community Colleges in the Phoenix area.

ANTHONY de GOUTIÈRE has been actively involved in the jewelry industry since 1950. He owned and managed de Goutière Jewellers Ltd. in Victoria, B.C. from 1960 until his retirement in January, 1994. He is a graduate gemologist and specializes in gemstone photography. His photographs have been published by numerous journals world wide. One of his photomicrographs of inclusions in quartz won first prize in the Micro classification of the *Journal of Gemology* photo competition in 1994.

NOBLE WITT AWARD: This award was established by PMWFM as an annual award to be given to an individual who has given outstanding effort in promoting the goals and ideals of FM. It is named for Noble Witt who exemplified many of those standards. The award will be presented at the FM banquet on Saturday evening.

ACTIVITIES

MAIN FLOOR DEALERS:
SIERRA CONTACT MINERALS. Reno, Nevada
MOUNTAIN MINERALS INTERNATIONAL.
 Louisville, Colorado
ROBERTS MINERALS. Twain Harte, California

... And dozens of satellite dealers! If you wish to sell or trade specimens from your motel room, notify the motel, so satellite dealers can be grouped together. FM will solicit a \$15.00 donation from each satellite dealer at the symposium.

DISPLAYS: Cases on the main floor will feature Classic Mineral localities minerals and Northwest materials covering the whole range of minerals. Several group cases will be available for those wishing to show only a specimen or two from their own collections. Participants are invited to bring minerals to show off in this manner. Please note on your registration form what you will be bringing so space can be allowed.

MICROMOUNT SEMINAR: Microscopes will be available for study in the micromount room on Saturday evening. Tables will be manned by competent help who can assist in mineral I.D. Bring micromounts for show or for identification. Trading will be encouraged.

TRADING: Only the main floor dealers will be allowed to sell minerals on the main floor. Selling and trading may take place at any time in the motel rooms. Dozens of NW collectors bring material to this show to swap and sell, so bring your trading stock.

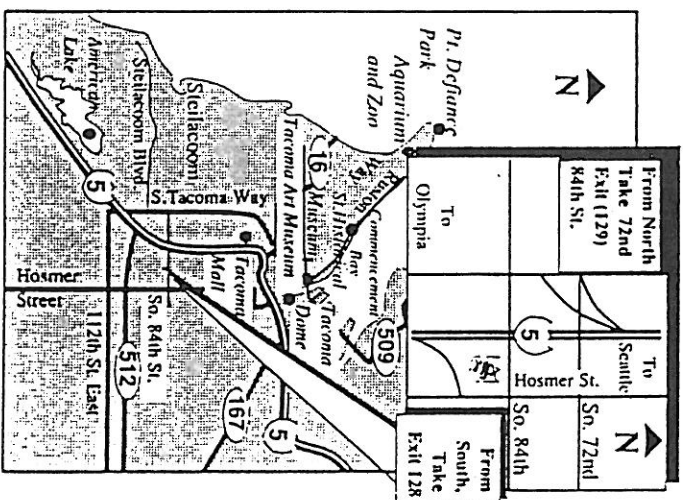
COMPETITIONS: There will be a best mineral photo/slide competition, a best non-commercial self collected specimen and an ugliest mineral competition. Prize awards will be given in each category. Please bring a favorite mineral specimen from your collection and a slide showing your best photographic efforts for these competitions. Entries may be made at the symposium registration table when you check in.

F.M. BENEFIT AUCTIONS: Much of the financial support for this non-profit symposium is derived from the sale of donated mineral specimens at our auctions. Please bring a quality specimen to donate. We depend upon your generosity. Donations are tax deductible. Sales will be conducted in two venues. Three silent auctions will be held during program breaks on Saturday and Sunday. Each auction will be open for bids at the start of free time and will close for selected to be sold at a live bid auction during the dessert program at the Saturday Banquet. Plan on bidding at these auctions. It's fun, rewarding, and supports FM.

F.M. MEALS: FM sponsors three meal functions at the Symposium. A Saturday morning breakfast and the Saturday buffet lunch are optional with registration and need to be purchased separately. These meals are critical to the success of the symposium as their sales help offset the room costs. Come and dine with

us and support FM. The FM Banquet on Saturday night is included in your registration. Additional banquet tickets may be purchased separately for a spouse or friend. Please note these on your registration form.

REGISTRATION: Registration for the three day symposium by mail before September 10th is \$34 for FM (Friends of Mineralogy) members and \$49 for non-members. Registration by mail after September 10th and at the door is \$39 for FM members and \$54 for non-members. Registration includes all main floor activities, lectures, competitions, micromount seminar, and FM Banquet. Non-member registration also includes membership in both local and national Friends of Mineralogy for the remainder of 1995 and 1996. Those wishing only to view the displays and visit the dealers may do so on Friday 5:00 pm - 11:00 pm or Saturday 7:30 pm - 11:00 pm for a fee of \$3.00 at the door. Motel reservations should be made directly with the motel. If reservations are made by phone be sure to let them know that you are an FM Symposium participant.



COME EARLY AND STAY LATE IT'S OUR

**21st Annual
Pacific Northwest Chapter
Friends of Mineralogy
Symposium
Classic Mineral Localities II**

Featuring: 3 award winning competitions

1- Best Self Collected Specimens

This traditional award is selected by popular ballot for your best and newest finds.

2- My Favorite Ugly

A traditional award is selected by popular ballot for that special ugly specimen in your collection. On a 3 x 5 card or smaller print your name and why this is your favorite ugly.

3- Slide Competition

A traditional award winning contest where photographic technique and subjects visual appeal is determined and judged through popular ballot.

**Saturday Night Auction and
Saturday and Sunday Silent Auctions**

These are our major money making events for our chapters Symposium. Cheryl Burchim will make the rounds to the main floor dealers as well as to the satellite dealers to collect your donations for this year's events. Please donate quality specimens, books or (?) generously making the donation "hurt a little". Members who are not in rooms are welcome to and encouraged to bring in material which may be donated at the registration desk with Cheryl or another volunteer. Remember that through your gift giving, you help make this Symposium happen. All of your donations are tax deductible.

Buffet Style Meals

The popular "all you can eat" style meals will again be offered this year. Our Chapter is required to purchase a minimum number of breakfasts and lunches during the Symposium. If we meet the minimum requirement, then the large meeting hall for our displays is free. If we don't meet the minimum it will cost us \$900.00 for rent. So please when registering, also sign up for the meals so that our 21st Annual Symposium can be a financial success.

T - Shirts

Kristen Lindell has designed this year's wonderful Symposium T - Shirts. They will be available in medium and large sizes again this year. These are very popular and make wonderful gifts and collector's mementos. So bring and tell all your friends that the Pacific Northwest's finest mineral event is Friday, Saturday and Sunday, Sept. 22-24th at the Sherwood Inn in Tacoma.

