

**PACIFIC  
NORTHWEST  
CHAPTER**



***NEWSLETTER***

**JULY 1996**

President: Wes Gannaway 1604 Brookwood Dr., Ferndale, Wa 98248 360-384-4209  
Vice President: Sharleen Harvey 2309 SW 1st Ave, #2142, Portland, Or 503-248-4194  
Treasurer: Cheryl Burchim 3305 281st, Ocean Park, Wa 98640 360-665-6426  
Secretary: Karen Hinderman 6217 Tyler Lane, Ferndale, Wa 98248 360-380-2035

**PRESIDENT'S MESSAGE:**

It looks like good collecting weather has finally arrived in the Pacific NW, and although I know that many of us collect year-round, it is nice to get some sunshine. I have made a couple of trips so far this year and have done well. I plan on setting up a couple of cases at the symposium and I encourage all FM members to do the same. It would be great to have to tell someone that we don't have enough cases for all of the people that wish to display. It is never too early to start planning your display. I know that most of us wait until the last minute to put a display together and still manage to make it look good, but prior planning is usually much better.

Speaking of the symposium, Carl Harris and John Lindell have put it all together and it looks like it will be a great one. One way to insure that the work of Carl and John will be appreciated would be if every FM member attends the symposium. In fact, it would be super if each member brought a guest or friend or fellow non-FM collector along to enjoy the program. Everyone should be receiving their registration form soon. Be sure to return them as soon as possible.

The June meeting was on the 23rd at Vancouver, with 10 members present. Discussion took place on items pertaining to the symposium and about the museum that the Rices are organizing.

The fall meeting will likely be in the NW part of the state, such as at my home. A date and time will be in the next bulletin.

**SYMPOSIUM NEWS:**

Our 22nd annual symposium will be on September 27, 28, and 29. The symposium chairpersons have really done a great job this time. The list of speakers is impressive and will include Randy Becker on Denny Mountain, Bart Cannon on the Northwest, Lou Landers on quartz, Mark Mauthner on the Engineer Mine in the Northern Canada, Rudy Tchernick on zeolites, Doug Toland on the Green Monster Mine in Alaska, and Rod Tyson on Northern Canada.

We hope to have our three good friends back as dealers on the main floor: Mountain Minerals, Sierra Contact, and Roberts Minerals, and all of the satellite dealers. If you

wish to be a satellite dealer be sure to contact Rudy Tchernick about a room and registration. Also, be sure to call the Sherwood Inn for your room reservation early.

We will continue to pursue the ultimate best self collected specimen and the best big ugly rock, as well as the one slide that will beat Rick Dillhoff.

One major method that we use to raise money to fund the symposium is to have our silent and after-dinner auctions, so don't forget to bring one or more specimens for this event.

#### **FIELD TRIPS:**

On August 3rd and 4th we will have the 2nd annual field trip to the Olympic Peninsula. We will meet at 10 AM at the Safeway parking lot in Port Angeles, and then proceed to the clay pit at Twin for fossils, which may be sparse this year due to inactivity at the pit. We will then have a BBQ at the John and Gloria Cornish residence in Port Angeles in the afternoon. Sunday morning we will meet at the Cornishes at 9 AM and then go to the Old Shine Quarry to collect zeolites and calcite crystals.

To get to the Cornishes drive west on 101 between Sequim and Port Angeles and turn north on the Old Olympic Highway (at the Wash. State Hwy Patrol office) and go north one block and turn left on Cedar Glen Drive. The house number is 40.

The Washington Pass field trip is on August 10 and 11 this year, with everyone meeting at the Kilpchuck Campground either Friday night or Saturday morning. Be sure to contact Cheryl Burchim to reserve a campsite.

The 1996 NWFMS show was at the Kitsap Co. fairgrounds this year. There seemed to be quite a good turnout on Friday. There were several good mineral displays although I noticed that any case in competition did not have the name of the owner. Notable cases included several FM members such as Doug Merson, Ray Lasmanis, Rudy Tchernick, and John Cornish. John displayed his Valentine Pocket calcite for the first time, and Rudy had a feature case of his zeolites. Other nice displays included a large Red Top Mountain geode, a display of Smithsonite, and a nice Flourite display. Several dealers had some nice pieces, and it looks like minerals from Eastern Europe are becoming more available.

#### **THE CANDY STORE:**

This is a new column dedicated to the description of a locality that is currently open to all collectors.

The first locality is the Gold Hill Mine in Tooele County in NW Utah. This locality is open to collecting all year round except in cases of unusually heavy snow. A precaution is to bring lots of liquids due to the heat and dryness. Drive to Gold Hill, about one hour south of Wendover, Utah/Nevada. Turn north on the Gold Hill-Callao road and go around the north end of the ridge that runs just east of Gold Hill for about 1.5 miles. As you curve back southward, you can see the large dump of the lower adit. Drive up the access road to the landing at the lower adit (the road is a bit rough but passable with some caution). The main glory hole (an ore rich stope that extends to the surface, creating a small open pit) is at the top of the hill to the south.

Arsenates are the primary minerals here, but a skarn along the west edge of the glory hole produces garnet and Japan Law quartz twins. Over 100 different minerals have been described from this mine. As you stand at the NW corner of the glory hole and look into the pit it is just like looking into the window of a candy store.

If anyone has a candy store that they are willing to share with other FM members, please send it along.

**BOOK REVIEWS:** by John Cornish

The Coffee Chased Us Up by Elof Norman

publ by the Mountaineers, Seattle, 1977

Monte Cristo lies within a deep canyon at the junction of Glacier and Seventy-Six Creeks, fifty miles due east of Port Gardner Bay, which at this time in the early 1890's was soon to become the "Pittsburgh of the West" or "The City Of Smokestacks", and which is today our own city of Everett.

John D. Rockefeller, considered the richest and most astute businessman in the country, invested millions of dollars into this great real estate development. It was hoped by the leaders of the small isolated mining town at Monte Cristo that Mr. Rockefeller might be interested in adding some of the wealth of the new mines to his holdings in exchange for constructing a railroad to the townsite.

And so he did, and so it was that a little boy named Elof, his younger sister Ely, and the mother Petra rode into town to meet their father and husband Otto Norman after being separated for two years. They had come all the way from Denmark to live in Monte Cristo. This book is an immensely heartwarming and delightful story of life in a simpler time.

note: this book, The Coffee Chased Us Up, will be an auction item at the symposium.

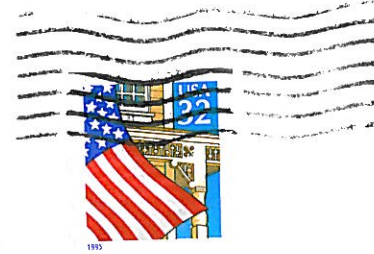
The Saga of the Comstock Lode

by George D. Lyman

publ. by Charles Scribners and Sons, NY, 1934

"Aladdin could not take a traveler to a country half so miraculous as that which lay less than half a mile below the parallel of familiar streets above. There were galleries glittering with silver spun as fine as a wire; there were nests of amethyst that glowed with a purple heart; there were strips of turquoise, veins of chrysoprase- pale blue and gray with waxlike luster. There were seams of quartz embedded in dark red porphyry. There was granular and crystalline diorite. It was a fabulous country."

A wealth of gold and silver came from this fantastic lode during the later half of the 19th century and this book offers us a window for viewing into these exciting times. Written in the flamboyant stylings of the day, adjectives and flowery descriptive passages abound. The author, using extensive early references along with the personal experiences gained from a childhood and adolescence spent in Virginia City at the turn of the century, has given us a lively rendering of this most exciting of mining camps.



PACIFIC  
NORTHWEST  
CHAPTER

Karen Hinderman, Secretary  
6217 Tyler Lane  
Ferndale, WA 98248

BOB MEYER  
16239 NE 18TH,  
BELLEVUE, WA 98008